

CURVE DATA

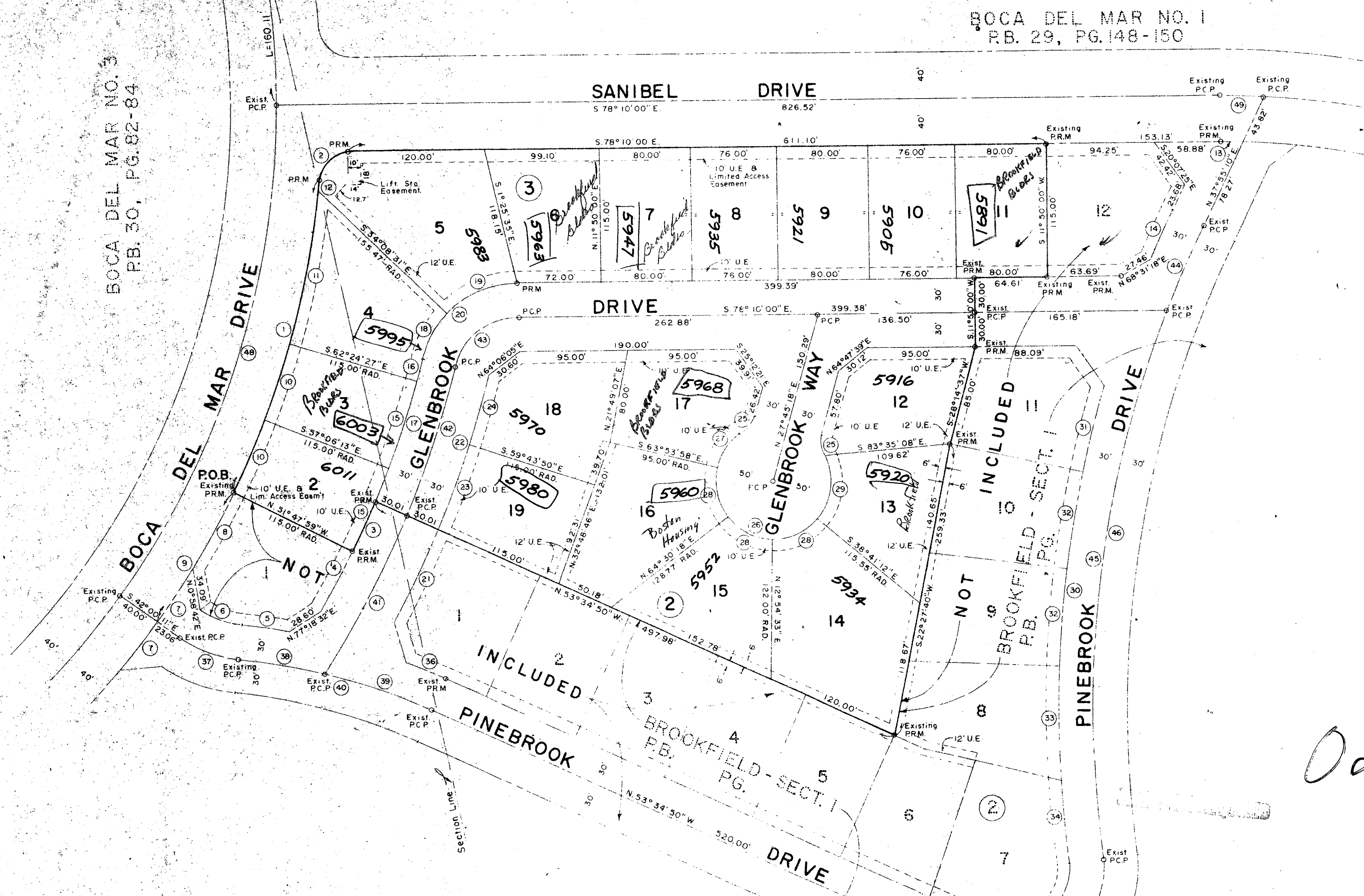
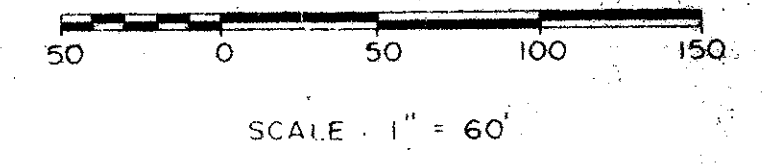
No.	Radius	Angle	Length	Chord	Tan
1	756.20	21° 35' 39"	283.00	283.32	144.21
2	25.00	85° 13' 38"	37.19	33.85	23.00
3	871.20	3° 05' 35"	47.03	47.02	23.62
4	871.20	4° 13' 04"	64.13	64.12	32.08
5	575.00	4° 16' 50"	42.96	42.95	21.49
6	71.57	30° 04' 39"	37.14	37.14	19.23
7	756.20	4° 02' 14"	53.28	53.27	26.65
8	756.20	5° 48' 34"	76.11	75.98	38.04
9	756.20	4° 47' 44"	129.30	129.14	64.81
10	756.20	5° 18' 14"	70.00	69.98	35.03
11	756.20	10° 13' 43"	135.00	134.82	67.68
12	756.20	0° 45' 28"	18.00	18.00	9.00
13	676.20	8° 13' 49"	14.52	14.52	7.26
14	993.51	2° 42' 33"	46.98	46.97	23.49
15	871.20	5° 18' 14"	80.69	80.62	40.35
16	871.20	1° 13' 22"	18.59	18.59	9.30
17	871.20	8° 44' 15"	132.86	132.73	66.56
18	85.00	29° 29' 18"	43.75	43.27	22.37
19	85.00	45° 58' 31"	68.20	66.39	36.06
20	85.00	75° 27' 39"	111.95	104.03	65.77
21	931.20	5° 29' 30"	89.25	89.22	44.66
22	931.20	8° 49' 19"	143.38	143.24	71.83
23	931.20	4° 55' 20"	80.00	79.97	40.02
24	931.20	3° 53' 59"	63.38	63.37	31.70
25	25.00	42° 50' 00"	18.69	18.26	9.81
26	50.00	26° 40' 00"	23.84	23.33	11.93
27	50.00	44° 29' 16"	38.82	37.85	19.45
28	50.00	51° 35' 45"	45.03	43.52	24.17
29	50.00	66° 23' 30"	57.94	54.75	32.71
30	993.51	24° 11' 56"	419.61	416.50	212.98
31	993.51	4° 27' 30"	77.31	77.29	38.67
32	993.51	4° 54' 07"	85.00	84.97	42.53
33	993.51	5° 46' 01"	100.00	99.96	50.04
34	993.51	4° 10' 11"	72.30	72.29	36.17
35	50.00	122° 00' 00"	106.47	87.46	90.20
36	575.00	3° 22' 55"	33.94	33.94	16.97
37	101.57	30° 04' 39"	53.32	52.71	27.29
38	545.00	8° 10' 03"	77.69	77.62	38.91
39	545.00	10° 19' 57"	98.28	98.15	49.28
40	545.00	18° 30' 00"	175.97	175.21	88.76
41	901.20	9° 48' 45"	154.34	154.15	77.36
42	901.20	8° 46' 52"	138.12	137.98	69.19
43	55.00	75° 27' 49"	72.44	67.32	42.56
44	963.51	4° 50' 30"	81.42	81.40	40.73
45	963.51	28° 39' 30"	481.93	476.92	246.12
46	963.51	33° 30' 00"	563.35	555.36	289.98
47	80.00	122° 00' 00"	170.34	139.94	144.32
48	716.20	36° 09' 49"	452.04	444.58	233.84
49	716.20	2° 42' 15"	33.80	33.80	16.90

P.U.D.
BROOKFIELD - SECTION 2
 A PLAT OF A PORTION OF SEC. 26 & 27, TWP. 47S., RGE. 42E.
 AND ALSO BEING A REPLAT OF A PORTION OF TRACT "B", BOCA DEL MAR NO. 1, AS RECORDED
 IN PLAT BOOK 29, PAGES 148-150 OF THE PUBLIC RECORDS OF PALM BEACH COUNTY, FLORIDA
 PALM BEACH COUNTY, FLORIDA

JOHN A. GRANT, JR., INC. CONSULTING ENGINEERS & LAND SURVEYORS BOCA RATON, FLORIDA

AUGUST, 1975

SHEET 2 OF 2



USE - SINGLE FAMILY	
AREA OF LOTS - SECTION 2	4.380 Ac.
AREA OF ROADS - SECTION 2	1.139 Ac.
TOTAL AREA - SECTION 2	5.519 Ac.
NO. OF UNITS - SECTION 2	18
DENSITY - SECTION 2	3.26/Ac.

BROOKFIELD SECTION 2

0205-380 **39**

26 + 27 / 47S / 42E

219 32/31
148/14

32-31